



IGFBP6 Polyclonal Antibody

Catalog No	YP-Ab-16024
Isotype	IgG
Reactivity	Human;Rat;Mouse;
Applications	WB;ELISA
Gene Name	IGFBP6
Protein Name	Insulin-like growth factor-binding protein 6
Immunogen	The antiserum was produced against synthesized peptide derived from the Internal region of human IGFBP6. AA range:101-150
Specificity	IGFBP6 Polyclonal Antibody detects endogenous levels of IGFBP6 protein.
Formulation	Liquid in PBS containing 50% glycerol, 0.5% BSA and 0.02% sodium azide.
Source	Polyclonal, Rabbit,IgG
Purification	The antibody was affinity-purified from rabbit antiserum by affinity-chromatography using epitope-specific immunogen.
Dilution	Western Blot: 1/500 - 1/2000. ELISA: 1/20000. Not yet tested in other applications.
Concentration	1 mg/ml
Purity	≥90%
Storage Stability	-20°C/1 year
Synonyms	IGFBP6; IBP6; Insulin-like growth factor-binding protein 6; IBP-6; IGF-binding protein 6; IGFBP-6
Observed Band	25kD
Cell Pathway	Secreted .
Tissue Specificity	Cerebrospinal fluid,Fibroblast,Osteosarcoma,Pancreas,Placen
Function	function:IGF-binding proteins prolong the half-life of the IGFs and have been shown to either inhibit or stimulate the growth promoting effects of the IGFs on cell culture. They alter the interaction of IGFs with their cell surface receptors.,PTM:O-linked glycans consist of hexose (probably Gal), N-acetylhexosamine (probably GalNAc) and sialic acid residues. Major glycoforms consist of 8-16 monosaccharides (by homology to IGFBP6 expressed recombinantly in CHO cells).,similarity:Contains 1 IGFBP N-terminal domain.,similarity:Contains 1 thyroglobulin type-1 domain.,
Background	function:IGF-binding proteins prolong the half-life of the IGFs and have been shown to either inhibit or stimulate the growth promoting effects of the IGFs on cell culture. They alter the interaction of IGFs with their cell surface receptors.,PTM:O-linked glycans consist of hexose (probably Gal), N-acetylhexosamine (probably GalNAc) and sialic acid residues. Major



glycoforms consist of 8-16 monosaccharides (by homology to IGFBP6 expressed recombinantly in CHO cells).,similarity:Contains 1 IGFBP N-terminal domain.,similarity:Contains 1 thyroglobulin type-1 domain.,

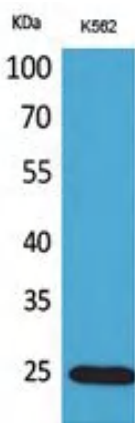
matters needing attention

Avoid repeated freezing and thawing!

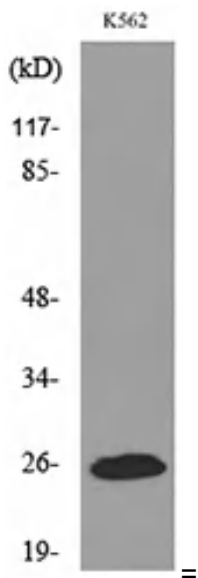
Usage suggestions

This product can be used in immunological reaction related experiments. For more information, please consult technical personnel.

Products Images



Western Blot analysis of K562 cells using IGFBP6 Polyclonal Antibody. Secondary antibody(catalog#:RS0002) was diluted at 1:20000



Western blot analysis of lysate from K562 cells, using IGFBP6 Antibody.